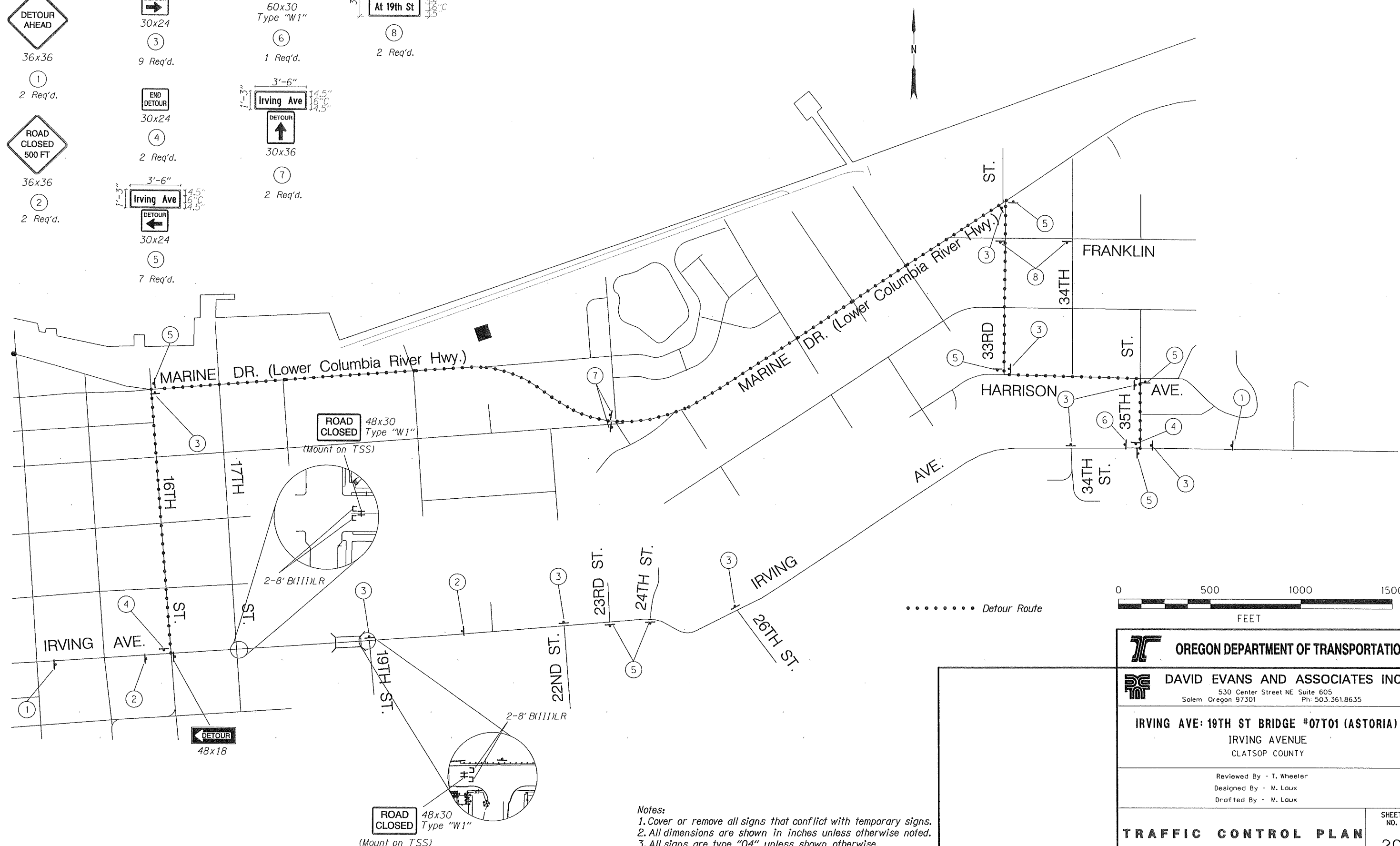
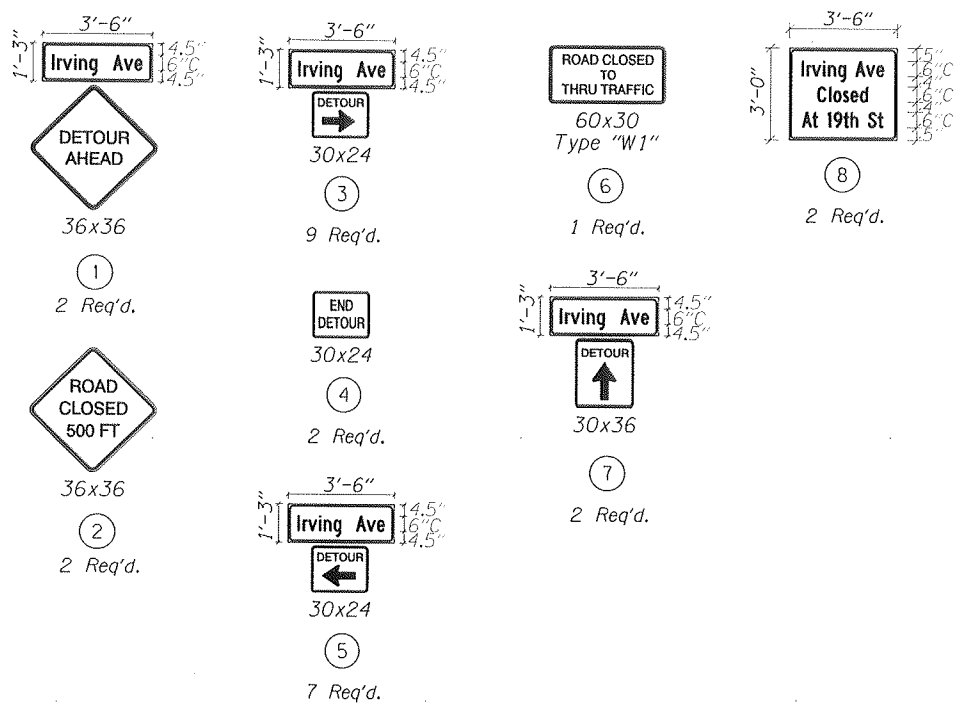


# D E T O U R

To Be Accompanied By Drg. Nos.  
 TM200, TM204, TM670, TM671, TM676, TM681, TM687,  
 TM800, TM820, TM821, & TM840

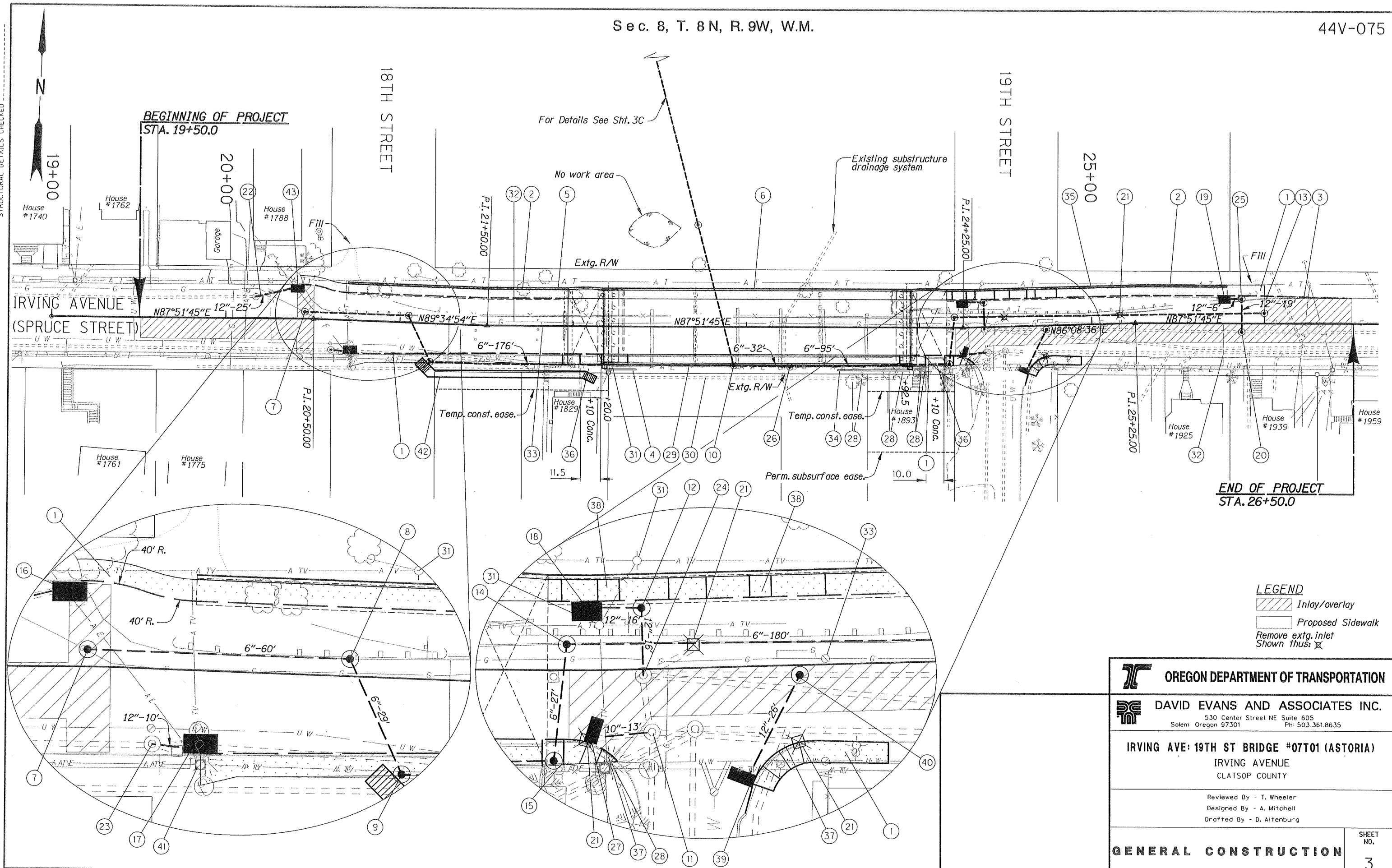
44V-075



**Notes:**  
 1. Cover or remove all signs that conflict with temporary signs.  
 2. All dimensions are shown in inches unless otherwise noted.  
 3. All signs are type "04" unless shown otherwise.

<b>OREGON DEPARTMENT OF TRANSPORTATION</b>	
<b>DAVID EVANS AND ASSOCIATES INC.</b> <small>530 Center Street NE Suite 605          Salem Oregon 97301 Ph: 503.361.8635</small>	
<b>IRVING AVE: 19TH ST BRIDGE #07T01 (ASTORIA)</b> IRVING AVENUE CLATSOP COUNTY	
<small>Reviewed By - T. Wheeler          Designed By - M. Laux          Drafted By - M. Laux</small>	
<b>TRAFFIC CONTROL PLAN</b>	SHEET NO. <b>2C</b>

STRUCTURAL DETAILS CHECKED



END OF PROJECT  
STA. 26+50.0

**LEGEND**

- Inlay/overlay
- Proposed Sidewalk
- Remove extg. inlet
- Shown thus:

	<b>OREGON DEPARTMENT OF TRANSPORTATION</b>
	<b>DAVID EVANS AND ASSOCIATES INC.</b> 530 Center Street NE Suite 605 Salem Oregon 97301 Ph: 503.361.8635
<b>IRVING AVE: 19TH ST BRIDGE #07T01 (ASTORIA)</b> IRVING AVENUE CLATSOP COUNTY	
Reviewed By - T. Wheeler Designed By - A. Mitchell Drafted By - D. Altenburg	
<b>GENERAL CONSTRUCTION</b>	SHEET NO. 3